



HELLENIC REPUBLIC

Piraeus, 6 May 2021

HELLENIC STATISTICAL AUTHORITY

## PRESS RELEASE

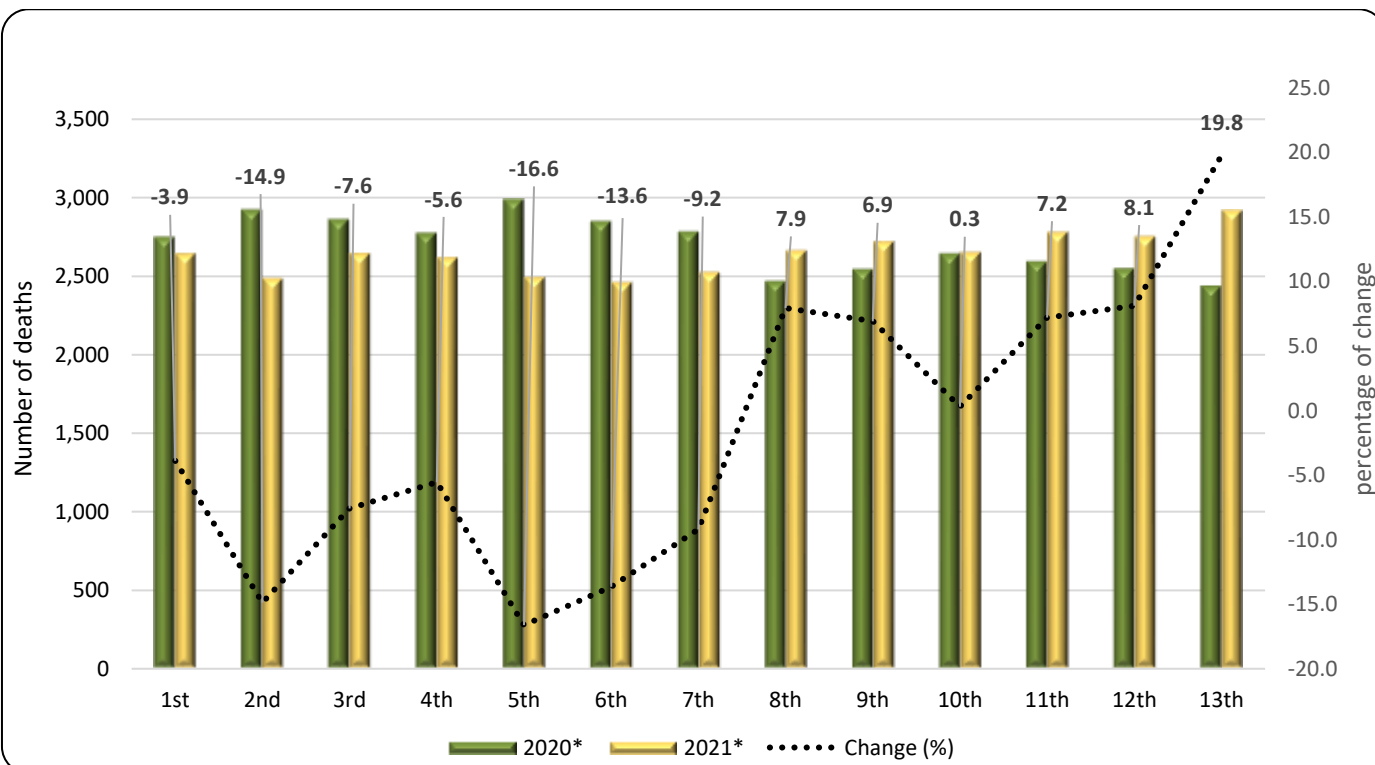
### DATA ON WEEKLY DEATHS: Period 1<sup>st</sup> to 13<sup>th</sup> week, 2021

The Hellenic Statistical Authority (ELSTAT) announces an ad-hoc press release with provisional statistical data depicting the weekly evolution of death counts for the period from the first (1<sup>st</sup>) to the thirteenth (13<sup>th</sup>) week of 2021. Data refer to the deaths that occurred in the Greek territory during that period due to various causes including deaths attributed to Covid-19.

The data included in this publication are compiled within the framework of the Vital Statistics Survey and are provided from all the Municipal Civil Registers of Greece according to the vital events that have been declared and registered up until the date of data transmission. Overdue registrations of deaths are integrated at a later stage in the date of occurrence.

According to these data, **the number of deaths in Greece for the 13 first weeks of 2021 (4/1/2021 – 4/4/2021)** amounted to **34,374** (17,593 men and 16,781 women) whereas for the first 13 weeks of **2020 (30/12/2019 – 29/3/2020)** **had amounted to 35,173** (17,507 men and 17,666 women), recording a decrease of 2.27%. The average number of deaths for the first 13 weeks of the six-year period 2015 – 2020 was 34,296 deaths, an increase of 78 deaths (0.23%). The annual rates of change for the period 2015 - 2020 amount to 0.27% in 2020 compared to 2019 (35,079), 8.76% in 2019 compared to 2018 (32,255), -11.63% in 2018 compared to 2017 (36,500), 15.84% in 2017 compared to 2016 (31,508) and -10.64% in 2016 compared to 2015 (35,259) (Tables 1, 2, 3 και 4).

Graph 1. Weekly evolution of deaths for the weeks 1<sup>st</sup> – 13<sup>th</sup>, 2020\* and 2021\*



\*Provisional data

#### Information on methodological issues:

Population, Employment and Cost of Living Statistics Division

Population and Migration Statistics Section

Sophia Bakalidou, tel: +30 213 135 2175

e-mail: [s.bakalidou@statistics.gr](mailto:s.bakalidou@statistics.gr)

Christos Christou, tel: +30 213 135 2884

e-mail: [c.christou@statistics.gr](mailto:c.christou@statistics.gr)

#### Information on data provision:

tel: +30 213 135 2022, 2308, 2310

e-mail: [data.dissem@statistics.gr](mailto:data.dissem@statistics.gr)

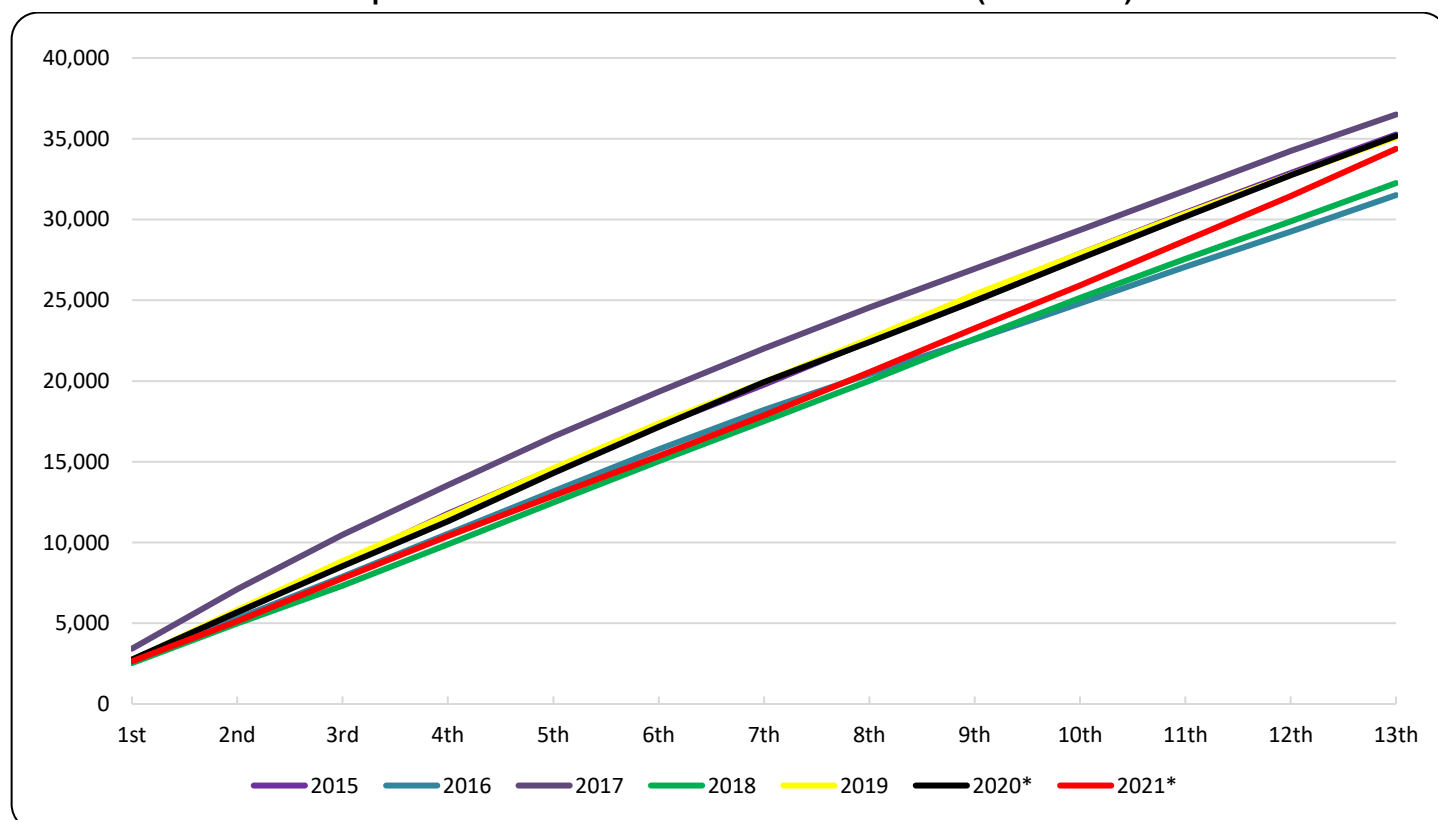
**Table 1. Weekly evolution of deaths, 2020 and 2021**

Week	2020*	2021*	Change (%)
1 <sup>st</sup>	2,751	2,644	-3.9
2 <sup>nd</sup>	2,923	2,488	-14.9
3 <sup>rd</sup>	2,863	2,646	-7.6
4 <sup>th</sup>	2,774	2,620	-5.6
5 <sup>th</sup>	2,990	2,493	-16.6
6 <sup>th</sup>	2,850	2,461	-13.6
7 <sup>th</sup>	2,782	2,526	-9.2
8 <sup>th</sup>	2,469	2,665	7.9
9 <sup>th</sup>	2,545	2,721	6.9
10 <sup>th</sup>	2,645	2,653	0.3
11 <sup>th</sup>	2,594	2,781	7.2
12 <sup>th</sup>	2,548	2,755	8.1
13 <sup>th</sup>	2,439	2,921	19.8
<b>Total</b>	<b>35,173</b>	<b>34,374</b>	<b>-2.27</b>

According to the above data, the highest increase of deaths for the period of 13 weeks of the year 2021 compared to 2020 was recorded in the 13<sup>th</sup> week (29/3 – 4/4/2021) increased by 19.8%, the 12<sup>th</sup> week (22/3 – 28/3/2021) by 8.1% and the 8<sup>th</sup> week (22/2 – 28/2/2021) by 7.9%.

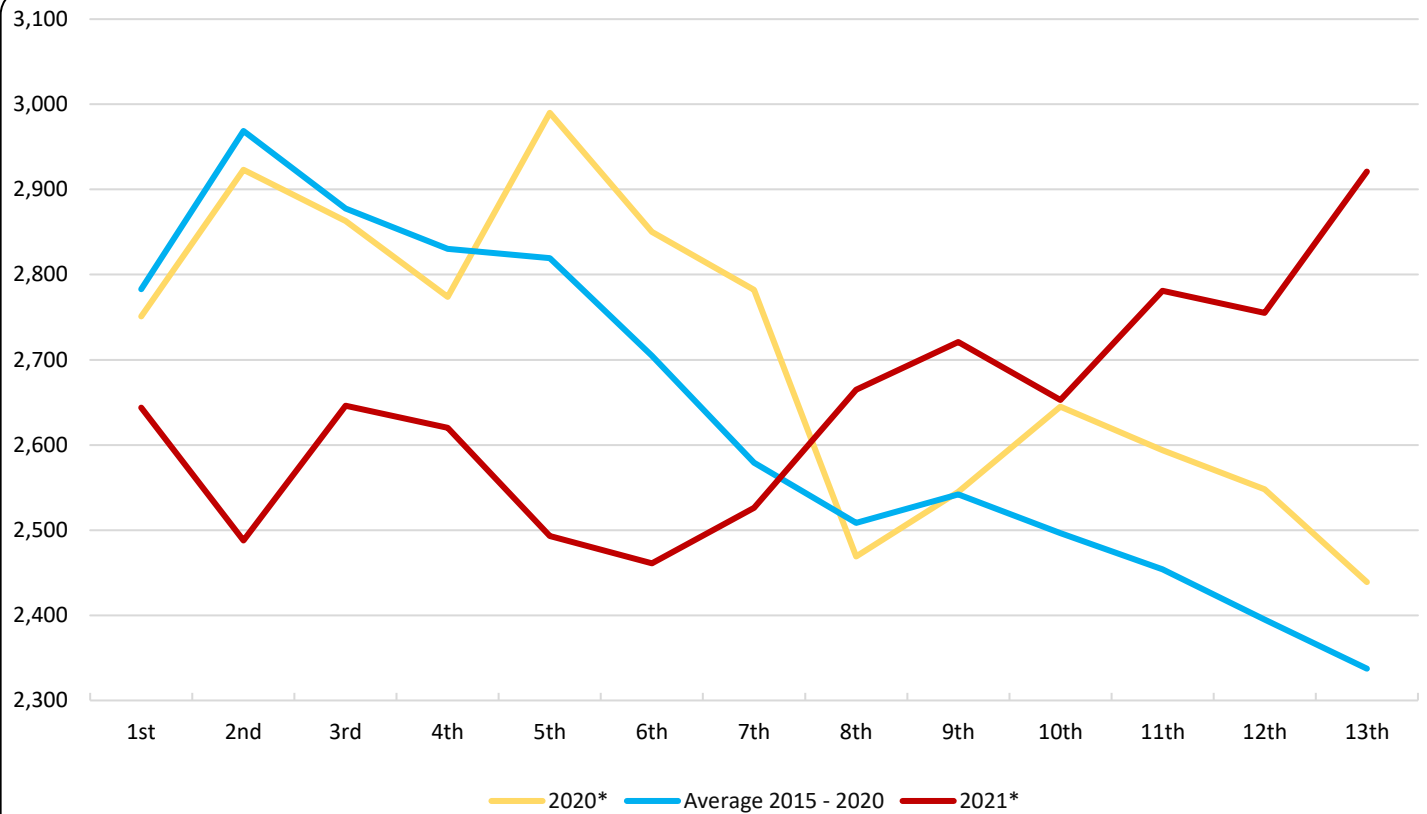
The lowest number of deaths during the corresponding period of 2021 compared to 2020 was recorded in the 5<sup>th</sup> week (1/2 – 7/2/2021) decreased by -16.6%, the 2<sup>nd</sup> (11/1 – 17/1/2021) by -14.9% and the 6<sup>th</sup> (8/2/2021 - 14/2/2021) by -13.6% (Table 1).

It should be noted that data are updated after integration of more recent data or upon revision of already transmitted data by the Registry Offices. Consequently, data may differ from those already published in previous Press Releases.

**Graph 2. Deaths for the weeks 1<sup>st</sup> – 13<sup>th</sup> 2015 - 2021 (cumulative)**

\*Provisional data

**Graph 3. Weekly deaths for weeks 1<sup>st</sup> - 13<sup>th</sup>, 2020, 2021 and Average for the period 2015-2020**



**Table 2. Deaths for the weeks 1<sup>st</sup> – 13<sup>th</sup>, 2015 - 2021 (cumulative)**

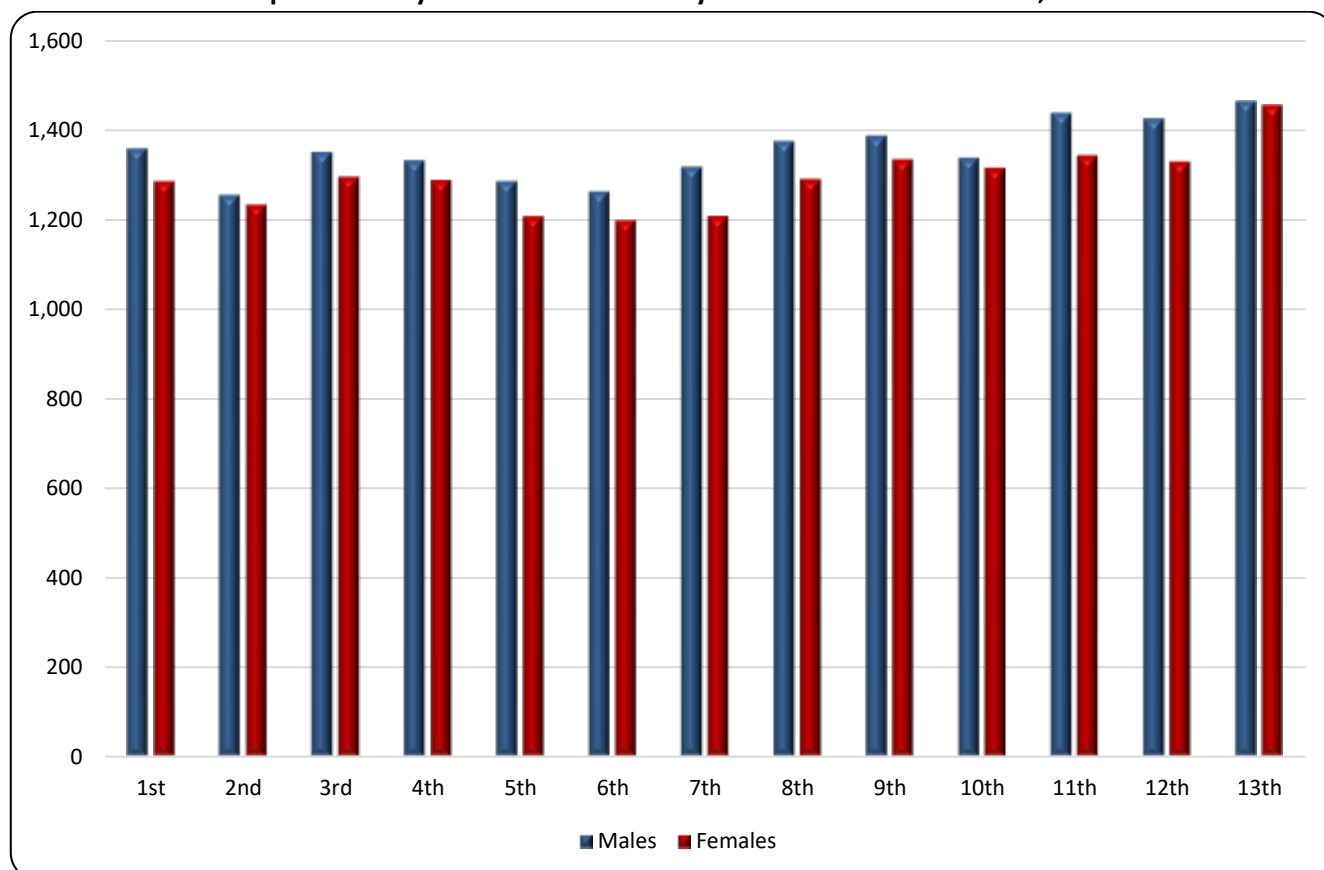
Week/Year	2015	2016	2017	2018	2019	2020*	2021*	Average 2015 - 2020
1 <sup>st</sup>	2,645	2,637	3,425	2,533	2,706	2,751	2,644	2,783
1 <sup>st</sup> - 2 <sup>nd</sup>	5,658	5,275	7,105	4,986	5,811	5,674	5,132	5,752
1 <sup>st</sup> - 3 <sup>rd</sup>	8,711	7,876	10,469	7,331	8,850	8,537	7,778	8,629
1 <sup>st</sup> - 4 <sup>th</sup>	11,776	10,528	13,551	9,879	11,710	11,311	10,398	11,459
1 <sup>st</sup> - 5 <sup>th</sup>	14,554	13,177	16,553	12,484	14,603	14,301	12,891	14,279
1 <sup>st</sup> - 6 <sup>th</sup>	17,219	15,771	19,343	15,041	17,375	17,151	15,352	16,983
1 <sup>st</sup> - 7 <sup>th</sup>	19,770	18,207	22,018	17,510	19,938	19,933	17,878	19,563
1 <sup>st</sup> - 8 <sup>th</sup>	22,460	20,422	24,541	20,003	22,598	22,402	20,543	22,071
1 <sup>st</sup> - 9 <sup>th</sup>	25,250	22,561	26,940	22,613	25,367	24,947	23,264	24,613
1 <sup>st</sup> - 10 <sup>th</sup>	27,879	24,809	29,345	25,145	27,886	27,592	25,917	26,939
1 <sup>st</sup> - 11 <sup>th</sup>	30,426	27,064	31,789	27,560	30,356	30,186	28,698	29,440
1 <sup>st</sup> - 12 <sup>th</sup>	32,883	29,249	34,247	29,890	32,747	32,734	31,453	31,958
1 <sup>st</sup> - 13 <sup>th</sup>	35,259	31,508	36,500	32,255	35,079	35,173	34,374	34,296
Change (%)		-10.64	15.84	-11.63	8.76	0.27	-2.27	

\*Provisional data

**Table 3. Weekly evolution of deaths by sex for the weeks 1<sup>st</sup> – 13<sup>th</sup>, 2021\***

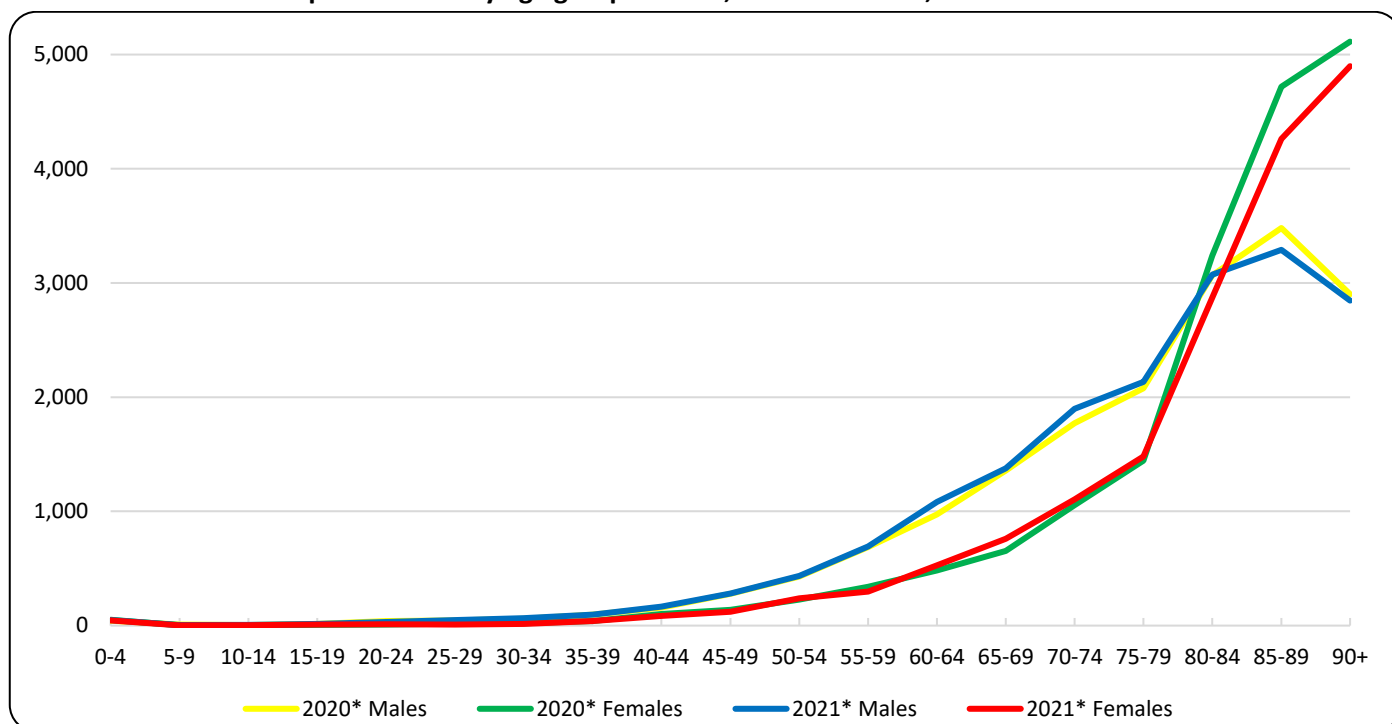
Week	Total	Males	Females
1 <sup>st</sup>	2,644	1,359	1,285
2 <sup>nd</sup>	2,488	1,255	1,233
3 <sup>rd</sup>	2,646	1,351	1,295
4 <sup>th</sup>	2,620	1,332	1,288
5 <sup>th</sup>	2,493	1,286	1,207
6 <sup>th</sup>	2,461	1,263	1,198
7 <sup>th</sup>	2,526	1,318	1,208
8 <sup>th</sup>	2,665	1,375	1,290
9 <sup>th</sup>	2,721	1,387	1,334
10 <sup>th</sup>	2,653	1,338	1,315
11 <sup>th</sup>	2,781	1,438	1,343
12 <sup>th</sup>	2,755	1,426	1,329
13 <sup>th</sup>	2,921	1,465	1,456
<b>Total</b>	<b>34,374</b>	<b>17,593</b>	<b>16,781</b>

**Graph 4. Weekly evolution of deaths by sex for the weeks 1<sup>st</sup> – 13<sup>th</sup>, 2021\***



\*Provisional data

**Graph 5. Deaths by age group and sex, weeks 1<sup>st</sup> – 13<sup>th</sup>, 2020\* and 2021\***



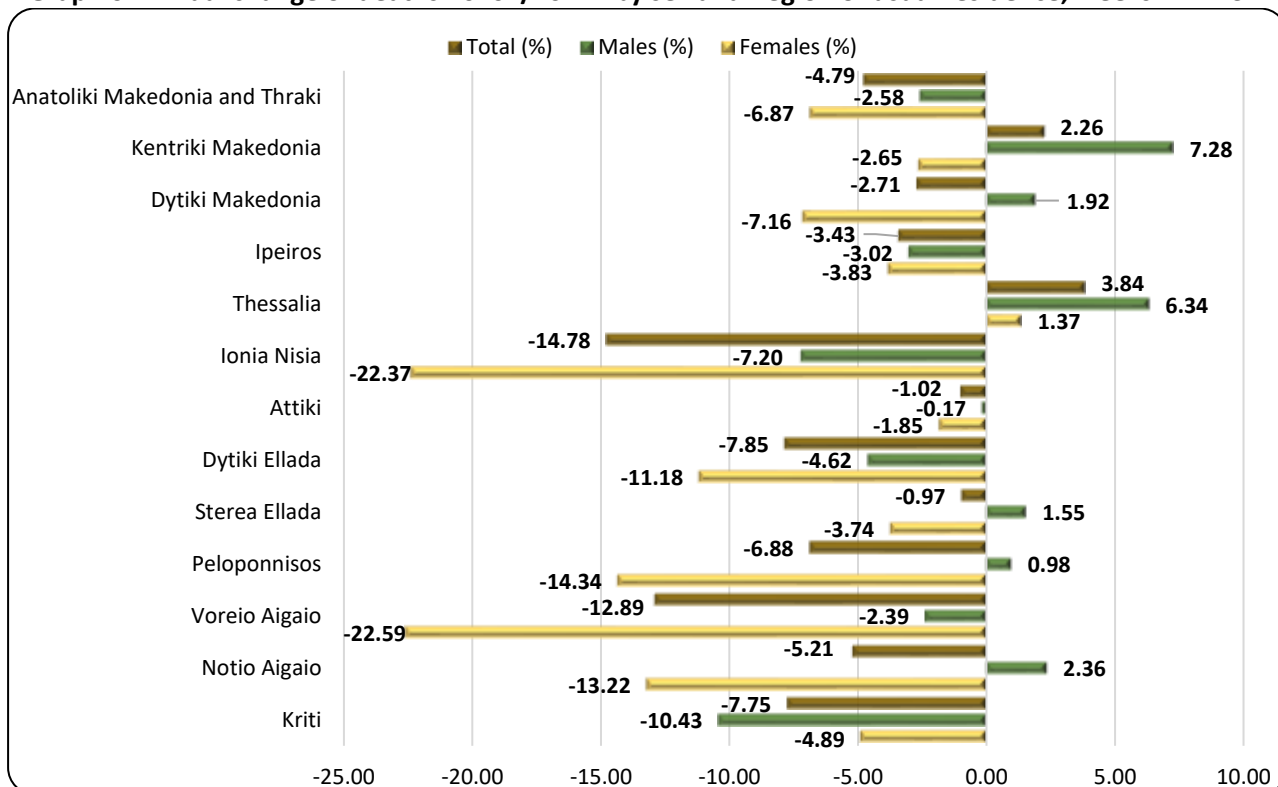
**Table 4. Deaths by age group and sex, weeks 1<sup>st</sup> – 13<sup>th</sup>, 2020 and 2021**

Year	2020*			2021*		
Age	Total	Males	Females	Total	Males	Females
0 - 4	92	42	50	93	48	45
5 - 9	12	9	3	7	5	2
10 - 14	8	5	3	10	6	4
15 - 19	21	14	7	25	15	10
20 - 24	49	41	8	44	32	12
25 - 29	64	46	18	57	48	9
30 - 34	79	59	20	81	65	16
35 - 39	137	97	40	136	97	39
40 - 44	260	159	101	251	166	85
45 - 49	416	277	139	402	281	121
50 - 54	657	430	227	674	436	238
55 - 59	1,027	687	340	990	693	297
60 - 64	1,454	972	482	1,610	1,083	527
65 - 69	2,012	1,357	655	2,136	1,376	760
70 - 74	2,826	1,772	1,054	3,003	1,899	1,104
75 - 79	3,524	2,079	1,445	3,615	2,134	1,481
80 - 84	6,305	3,066	3,239	5,943	3,073	2,870
85 - 89	8,200	3,481	4,719	7,552	3,290	4,262
90+	8,016	2,903	5,113	7,743	2,845	4,898
Unknown	14	11	3	2	1	1
<b>Total</b>	<b>35,173</b>	<b>17,507</b>	<b>17,666</b>	<b>34,374</b>	<b>17,593</b>	<b>16,781</b>

\*Provisional data

As regards the breakdown of data by age, during the 13 first weeks of 2021 more deaths were observed compared to the corresponding period of 2020, in absolute figures, for the age groups 70 to 74 (177 deaths), 60 to 64 (156), 65 to 69 (124) and 75 to 79 (91), whereas less deaths were observed mainly for the age 85 to 89 (648 deaths), 80 to 84 (362) and 90+ (273) (Table 4).

**Graph 6. Annual change of deaths 2020\*/2021\* by sex and Region of usual residence, weeks 1<sup>st</sup> – 13<sup>th</sup>**



**Table 5. Annual change of deaths 2020/2021 by sex and Region of usual residence, weeks 1<sup>st</sup> – 13<sup>th</sup>**

Year	2020*			2021*			Change (%)		
Region (NUTS2)	Total	Males	Females	Total	Males	Females	Total	Males	Females
Anatoliki Makedonia and Thraki	2,152	1,045	1,107	2,049	1,018	1,031	-4.79	-2.58	-6.87
Kentriki Makedonia	5,974	2,954	3,020	6,109	3,169	2,940	2.26	7.28	-2.65
Dytiki Makedonia	958	469	489	932	478	454	-2.71	1.92	-7.16
Ipeiros	1,138	563	575	1,099	546	553	-3.43	-3.02	-3.83
Thessalia	2,471	1,230	1,241	2,566	1,308	1,258	3.84	6.34	1.37
Ionian Islands	778	389	389	663	361	302	-14.78	-7.20	-22.37
Attiki	12,018	5,948	6,070	11,896	5,938	5,958	-1.02	-0.17	-1.85
Dytiki Ellada	2,345	1,191	1,154	2,161	1,136	1,025	-7.85	-4.62	-11.18
Stereia Ellada	1,849	967	882	1,831	982	849	-0.97	1.55	-3.74
Peloponnisos	2,092	1,018	1,074	1,948	1,028	920	-6.88	0.98	-14.34
Voreio Aigaio	698	335	363	608	327	281	-12.89	-2.39	-22.59
Notio Aigaio	825	424	401	782	434	348	-5.21	2.36	-13.22
Kriti	1,858	959	899	1,714	859	855	-7.75	-10.43	-4.89
Unknown	17	15	2	16	9	7	-5.88	-40.00	250.00
<b>Total</b>	<b>35,173</b>	<b>17,507</b>	<b>17,666</b>	<b>34,374</b>	<b>17,593</b>	<b>16,781</b>	<b>-2.27</b>	<b>0.49</b>	<b>-5.01</b>
Abroad	87	63	24	50	34	16	-42.53	-46.03	33.33

\*Provisional data

As regards the breakdown of data by place of usual residence of the deceased persons, an increase of deaths is observed in two (2) Regions and a decrease in eleven (11), during the first 13 weeks of 2021 as compared to the deaths of the corresponding period of 2020. The increase in absolute figures is observed in the Region of Kentriki Makedonia and Thessalia namely by 135 and 95 deaths respectively and the most significant decrease in the Region of Dytiki Ellada by 184 deaths (Graph 6, Table 5).

## **EXPLANATORY NOTES**

<b>Vital Statistics-Data on weekly deaths</b>	For the Vital statistics Survey, data are provided by Civil Register Offices from all over the Country. Data presented in this press release refer to the weekly evolution of death counts according to the international standard of weeks ISO 8601. This is an ad-hoc data processing for the purpose of depicting the evolution of deaths during the Covid-19 pandemic.
<b>Reference periods</b>	2020: 30/12/2019 – 29/3/2020 2021: 4/1/2021 - 4/4/2021
<b>Legal Framework</b>	Law 344/76 concerning the “Registration of vital events” which lays down the obligations of the Civil Register Offices to collect and then transmit the data, as well as by Law 3832/2010 on the “Greek Statistical System”, as amended.

**Coverage** The Vital Statistics survey is an exhaustive survey and covers all deaths of usual resident population that occur in the Greek territory.

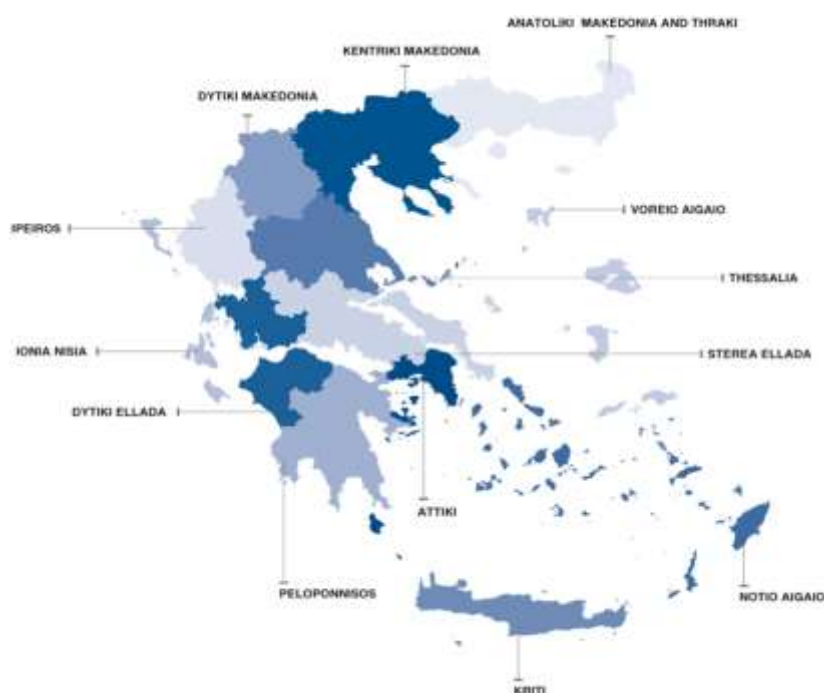
**Definitions** All deaths of usual residents taking place in the Greek territory are recorded, regardless of the cause of death. Deaths of usual resident population of other countries are also recorded but not counted. The deaths of migrants-refugees during their attempt to approach the Greek islands from the Turkish shores (drownings) are not included.

Causes of death are defined according to the International Statistical Classification of Diseases and Related Health Problems (ICD-10) and basic categories are Diseases of the Circulatory System, Diseases of the Respiratory System, Neoplasms, Infectious and Parasitic Diseases, Violent deaths and other causes, Covid-19 included.

**Methodology** Data on deaths and vital statistics undergo the necessary quality checks, are processed and presented in the form of tables.

**Geographical classification** Geographical classification is based on the Nomenclature of Territorial Units for Statistics (NUTS). Data are disseminated at Country and Region (NUTS2) level.

**Map of the Regions (NUTS2) of Greece**



**International  
Standard of  
Dates**

The 13 first weeks for 2020 and 2021 are defined according to international standard ISO 8601 as follows:

WEEK	2020	2021
1 <sup>st</sup>	30/12/2019 - 5/1/2020	4/1/2021 - 10/1/2021
2 <sup>nd</sup>	6/1/2020 - 12/1/2020	11/1/2021 - 17/1/2021
3 <sup>rd</sup>	13/1/2020 - 19/1/2020	18/1/2021 - 24/1/2021
4 <sup>th</sup>	20/1/2020 - 26/1/2020	25/1/2021 - 31/1/2021
5 <sup>th</sup>	27/1/2020 - 2/2/2020	1/2/2021 - 7/2/2021
6 <sup>th</sup>	3/2/2020 - 9/2/2020	8/2/2021 - 14/2/2021
7 <sup>th</sup>	10/2/2020 - 16/2/2020	15/2/2021 - 21/2/2021
8 <sup>th</sup>	17/2/2020 - 23/2/2020	22/2/2021 - 28/2/2021
9 <sup>th</sup>	24/2/2020 - 1/3/2020	1/3/2021 - 7/3/2021
10 <sup>th</sup>	2/3/2020 - 8/3/2020	8/3/2021 - 14/3/2021
11 <sup>th</sup>	9/3/2020 - 15/3/2020	15/3/2021 - 21/3/2021
12 <sup>th</sup>	16/3/2020 - 22/3/2020	22/3/2021 - 28/3/2021
13 <sup>th</sup>	23/3/2020 - 29/3/2020	29/3/2021 - 4/4/2021

**References:**

More information (tables, graphs, methodology) is available on the website of ELSTAT: <https://www.statistics.gr>, at the link Statistics, Population and Social Conditions, Demography.